



PRESSURE TRANSDUCERS

BULLETIN DB-742D
PART #K796463

Model 742D Differential Pressure Transducer

FEATURES

- ◆ 742D approved to MIL-T-24742 (SH)
- ◆ Non-interacting zero and span adjustments for quick calibration
- ◆ Pressure connections conform to MS16142
- ◆ Light weight, only 18 oz.

DESCRIPTION

The 742D Differential Pressure Transducer has been specially designed to meet the needs of military and/or marine applications and conforms to military specification MIL-T-24742 (SH). The 742D accurately measures differential pressures and transmits a fully adjustable 4 to 20 mA or 0-5 VDC output signal for remote display, recording, or control.

The 742D is available in differential ranges from 10 inches of water to 600 psi.

DIRECT REPLACEABILITY:

The 742D transducer is directly interchangeable with existing pressure transducers designed to MIL-T-24742. The mounting is designed to match the footprint of existing transducers for quick and easy installation.

MINIMAL MAINTENANCE:

Calibration is quick and easy with the non-interacting zero and span adjustments.



**DESIGNED FOR DEPENDABLE PRESSURE
SERVICE IN MARINE AND MILITARY APPLICATIONS**

SPECIFICATIONS

FUNCTIONAL SPECIFICATIONS:

in accordance with MIL-T-24742 (SH)

APPLICATIONS: steam, sea water, flue gas, ammonia, oxygen, other gases, fresh water, condensate, nitrogen, inert gases and liquid hydrocarbons

OUTPUT: 4-20 mADC, 0-5 VDC

POWER SUPPLY: 28 VDC ± 4.5 VDC with reverse polarity protection

LOOP RESISTANCE: 0 to 250 ohms

ZERO/SPAN ADJUSTMENTS: $\pm 5\%$ full scale output

TEMPERATURE LIMITS: Compensated: 0°C to 65°C (32°F to 149°F)

OVERPRESSURE: 200% of range or maximum rated line pressure (whichever is greater)

HUMIDITY: 0 to 100% RH

VOLUMETRIC DISPLACEMENT: less than 0.002 cc

WEIGHT: 18 oz. (0.51 kg)

PERFORMANCE SPECIFICATIONS

ACCURACY: $\pm 1.0\%$ of calibrated span including linearity, hysteresis, and temperature effects

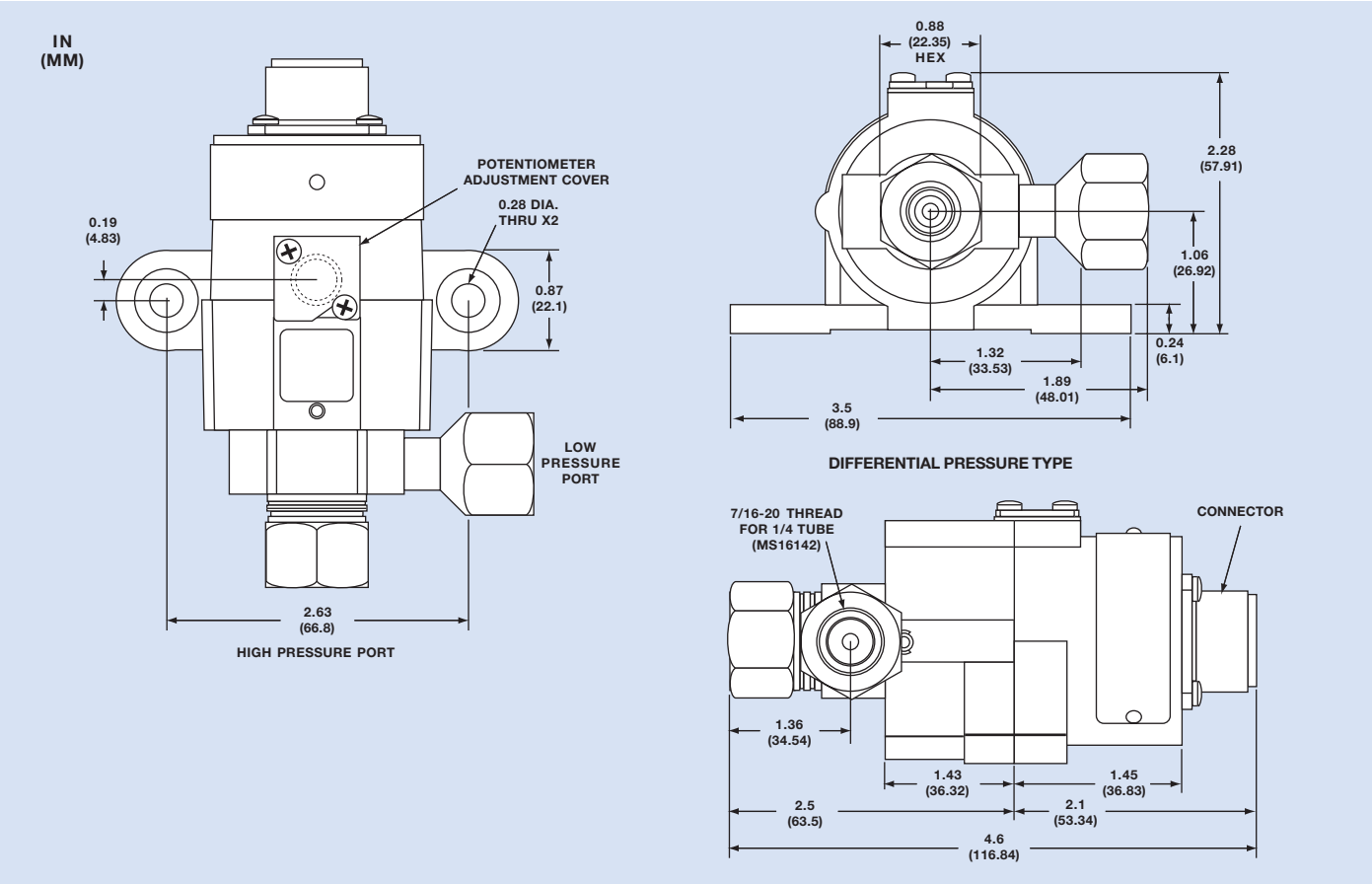
REPEATABILITY: within 0.5% of span

SHOCK TEST: in accordance with Grade-A, Class I, Type C of MIL-S-901

EMI: in accordance with MIL-STD-462 per MIL-T-24742

Model 742D Differential Pressure Transducer

DIMENSIONS



SPECIFICATIONS SUBJECT TO CHANGE WITHOUT NOTICE

AMETEK MIL SPEC			742D M24742D		F	F	015 11	C	150 2	D	DC	A	A	CONNECTOR		
														MS3452W14S-5P	BLANK	
														MS3456W14S-5S		
														MS3452L14S-5P	L	
														MS3456L14S-5S		
														MS3452LS14S-5P	LS	
														MS3456LS14S-5S		
TYPE																
AMETEK MIL SPEC 1.2.1.1																
742D M24742D																
APPLICATION																
SENSOR MATERIAL AMETEK MIL SPEC 1.2.1.2																
CRES F F																
NI CU M S																
CRES C G																
NI CU O O																
CRES C H																
DESIGNATOR																
AMETEK MIL SPEC 1.2.1.3 UNITS																
C C PSID																
G G WCD																
													</			

** Please consult factory

AMETEK®

U.S. GAUGE • PMT PRODUCTS

820 PENNSYLVANIA BLVD., FEASTERTVILLE, PENNSYLVANIA 19053 U.S.A.

TEL: (215) 355-6900 • FAX: (215) 354-1802 • www.ametekusg.com

© 2005, by AMETEK, Inc. All rights reserved.
2.5M205CW (110074)

ISO 9001:2000
CERTIFIED